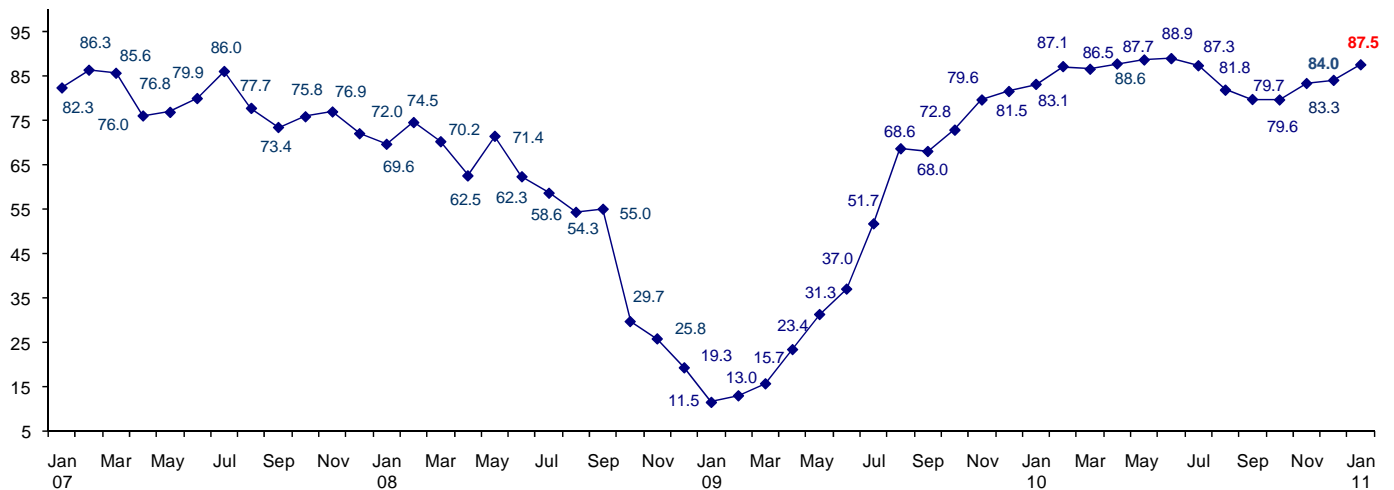


The World Connector Confidence Index Improves to 87.5

The connector confidence index rose in January to 87.5 from 84.0 in December. The WCCI has increased for three consecutive months.

World Connector Confidence Index (WCCI)
>50.0 = Positive



The **World Connector Confidence Index (WCCI)** is the average of all responses for “present situation,” and “future expectations.”

Present Business Expectations

Industry personnel were asked, "What is your appraisal of current business conditions (positive, negative, neutral)?"

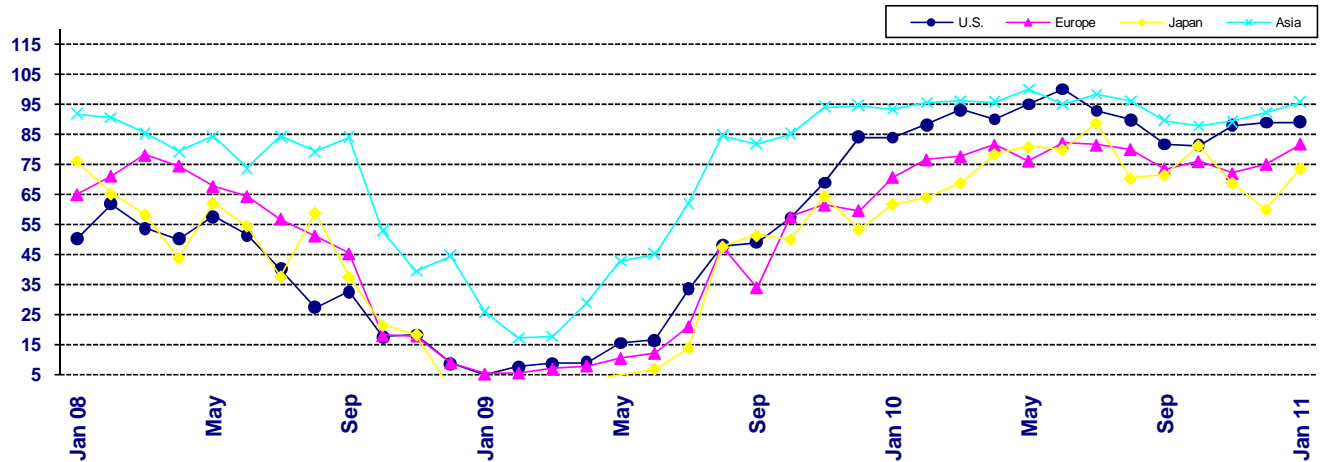
Present Situation Index

Region	2010												2011	Confidence Trend	
	Jan	Feb	Mar	Apr	May	Jun	Jul	Aug	Sept	Oct	Nov	Dec	Jan		
U.S.A	83.9	88.1	93.2	89.9	95.0	100	92.7	89.7	81.6	81.3	88.0	88.9	89.1	Positive - Up	
Europe	70.7	76.5	77.6	81.4	76.1	82.1	81.4	80.0	73.5	75.9	71.9	75.0	81.8		Positive - Up
Japan	61.8	64.0	68.8	78.4	80.8	80.0	88.9	70.4	71.4	81.3	68.8	60.0	73.7		Positive - Up
Asia	93.2	95.5	96.1	95.7	100.0	95.0	98.4	96.1	89.6	87.8	89.2	92.2	95.8		Positive - Up
World	79.3	85.7	86.7	87.6	88.6	90.7	90.6	85.6	79.8	78.4	80.9	82.0	86.6	Positive - Up	
Confidence Trend		Pos Up	Pos Up	Pos Up	Pos Up	Pos Up	Pos Dw	Pos Dw	Pos Dw	Pos Dw	Pos Up	Pos Up	Pos Up		

All regions are positive in confidence, and all rose in confidence.

Present Situation Index

>50.0 = Positive



Future Expectations

Industry personnel were asked, "What is your expectation of future business conditions six months from now (positive, negative, neutral)?"

Future Expectations Index

Region	2010												2011	Confidence Trend	
	Jan	Feb	Mar	Apr	May	Jun	Jul	Aug	Sept	Oct	Nov	Dec	Jan		
U.S.A	84.9	93.4	91.9	89.6	92.3	96.9	82.7	77.5	78.0	77.8	86.2	88.5	93.8	Positive - Up	
Europe	83.6	83.1	82.6	83.9	76.6	73.0	77.3	69.4	72.5	76.4	81.5	90.2	82.1		Positive - Dw
Japan	77.1	76.7	67.6	75.0	84.0	82.4	75.0	66.7	71.0	72.7	70.6	54.5	70.5		Positive - Up
Asia	96.9	97.0	93.4	95.7	100	94.7	100.0	93.5	93.9	91.4	94.7	94.0	96.1		Positive - Up
World	86.7	89.4	86.3	87.9	88.6	87.1	83.6	77.8	79.7	80.8	85.6	86.1	88.4	Positive - Up	
Confidence Trend		Pos	Pos	Pos	Pos	Pos	Pos	Pos	Pos	Pos	Pos	Pos	Pos		
		Up	Up	Dw	Up	Up	Dw	Dw	Up	Up	Up	Up	Up		

All regions are positive about future expectations, Japan, after dropping sharply in December in confidence, rose sharply in January for future expectations.

Future Expectations Index

(>50.0 = Positive)

